

Hampshire
and **Isle of Wight**



CHIE 
Care and Health Information Exchange

CHIE – An introduction

August 2022



Sharing information to support the provision of the best possible care

**Hampshire
and
Isle of Wight**

CHIE 
Care and Health Information Exchange



www.chie.org.uk

info.chie@nhs.net

www.hiowhealthandcare.org



What is CHIE?

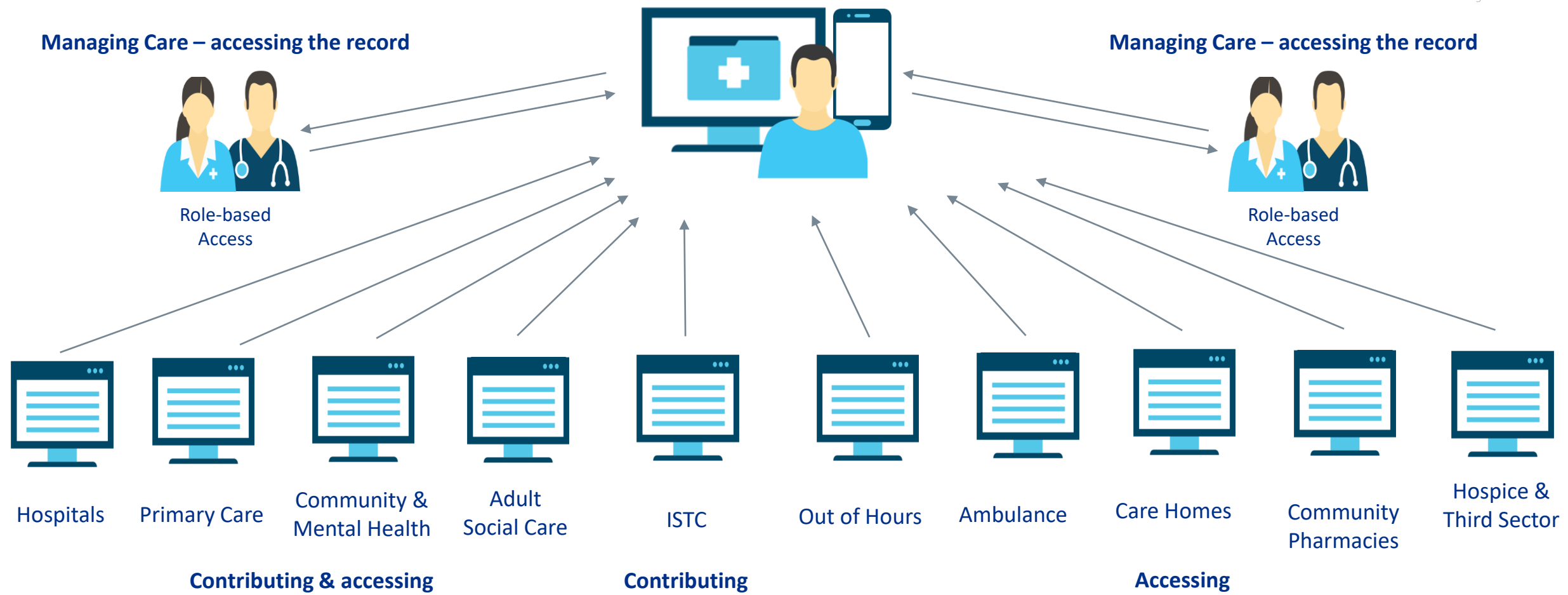
The Care and Health Information Exchange (CHIE), (in existence since 2003) is a secure system which shares health and social care information from GP surgeries, hospitals, community and mental health, social services and others.

CHIE helps professionals provide safer and faster treatment for people across Hampshire, the Isle of Wight and surrounding areas.



What is CHIE? (continued)

Single Citizen/Person Record



CHIE partner organisations



Acute Trusts

Hampshire Hospitals NHS Foundation Trust

Isle of Wight NHS Trust

Portsmouth Hospitals NHS Trust

University Hospitals Dorset NHS Foundation Trust

University Hospital Southampton NHS Foundation Trust

Community & Mental Health

Solent NHS Trust

Southern Health NHS Foundation Trust

Other health & care providers

care UK

CPSC Community Pharmacy South Central

Hampshire Care Association

HM PRISON SERVICE

Mountbatten

NORTH HAMPSHIRE URGENT CARE
Delivering essential healthcare services

PHL

Rowans Hospice

South Central Ambulance Service NHS Foundation Trust

Southern Hampshire PRIMARY CARE ALLIANCE

Primary Care

160+ general practice sites/partnerships

Hampshire and Isle of Wight

WESSEX Local Medical Committees
Incorporating Wessex LEaD

Local Authorities

Hampshire County Council

ISLE of WIGHT COUNCIL

Portsmouth CITY COUNCIL

SOUTHAMPTON CITY COUNCIL

Other partners

Carers Together
Supporting unpaid carers in Hampshire, Portsmouth and Southampton

CLAHRC Wessex
Collaboration for Leadership in Applied Health Research and Care

Dorset Care Record

NHS National Institute for Health Research

ORION HEALTH

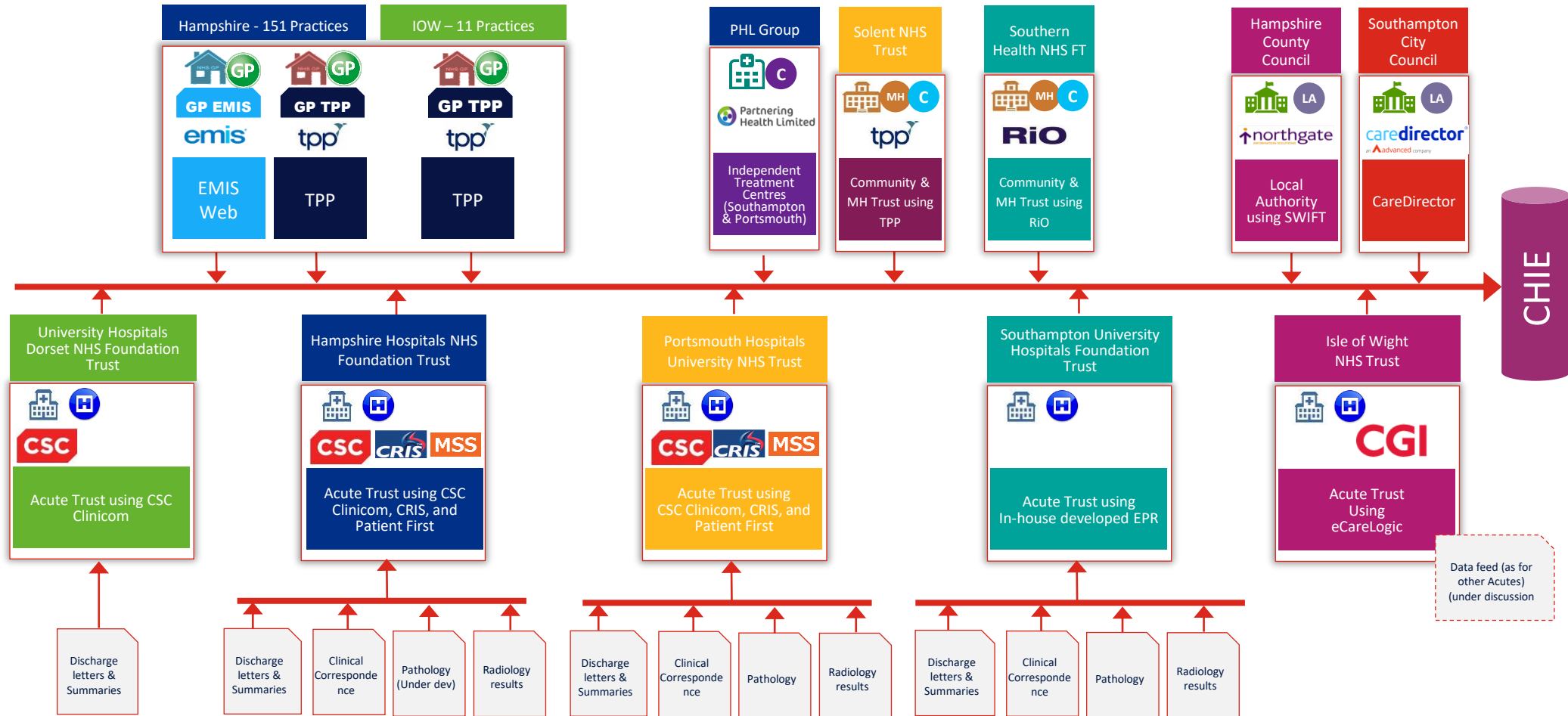
UNIVERSITY OF Southampton

Wessex Care Records
Leading the way to sharing information

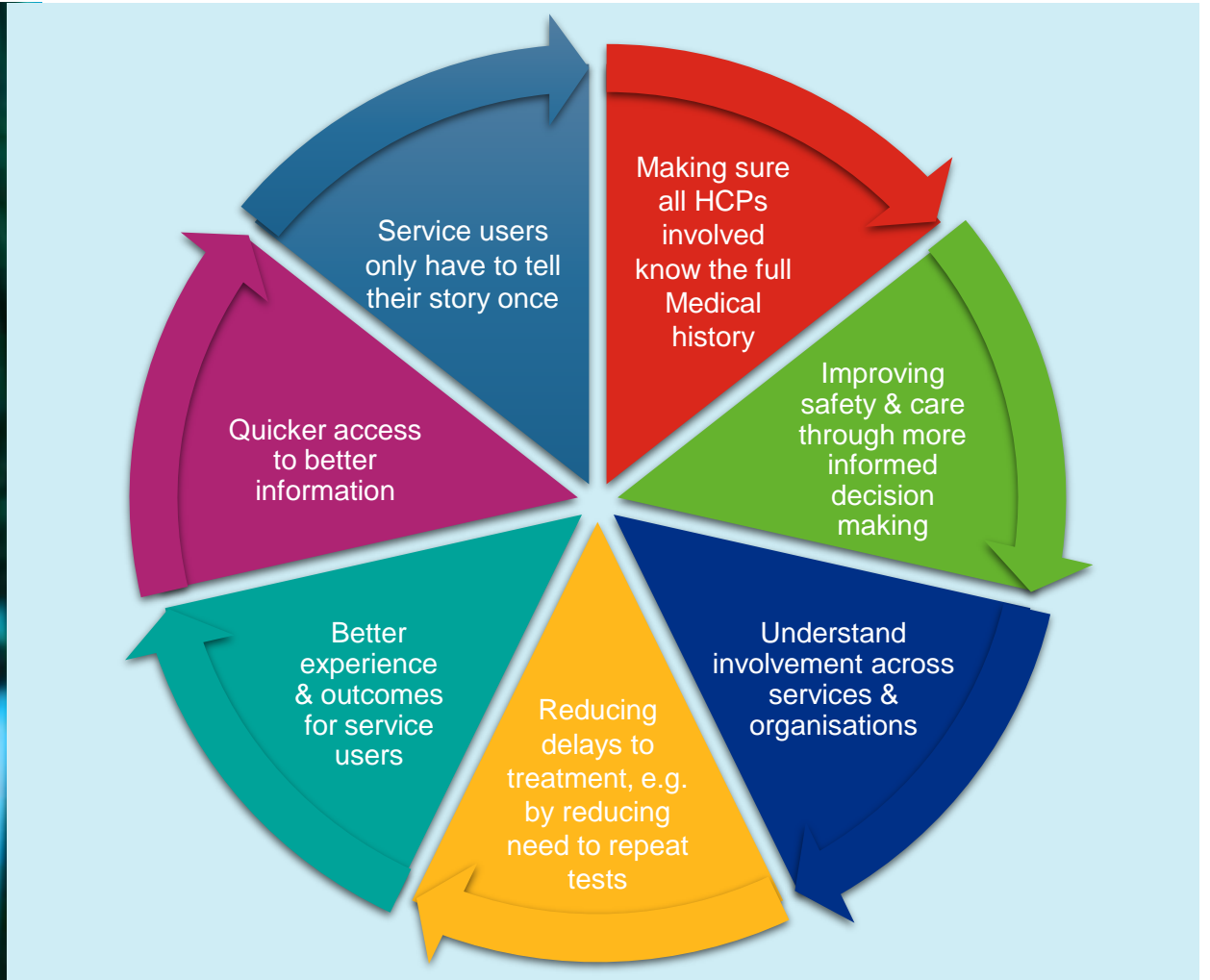
Wessex Academic Health Science Network



What data is in CHIE?



The Benefits



The Benefits (continued)

Particularly with older people, the patient would be more likely to end up in hospital without CHIE. It's a matter of patient safety.

OOH Doctor and GP

It's particularly useful for looking up non-monthly prescriptions and seeing when these were last taken. This is really important.

Pharmacist

The record has really helped me to plan more effective treatments as I have instant access to hospital and GP medication lists and test results. The big bonus for me is that I can now spend the time saved seeing more patients.

Physiotherapist

Delighted with the progress of this record sharing system. The solution fundamentally underpins the integration of services

Transformation Director

CHIE helps meet patient expectations, people are always saying, "but you've got my records already". It's great that we actually have.

Pharmacist

It's fantastic ... particularly in the case of patients who hop from one hospital to another within the region allowing continuity of care, and minimising repeat investigations

Consultant in Elderly Medicine

The record is helping Pharmacy deliver speedier medicine reconciliation on the wards as it gives us visibility of not only hospital medication lists, but GP and Chemotherapy medication. When we are 'on-call' we can access this from home and make quicker responses to any request received from the wards

Pharmacist

The CHIE system has been extremely useful as an additional layer of information to support the current pre-admission process. The system is easy to navigate and having this information available to the home has helped us create continuity in the clinical support we can offer.

Manager, Care Home

So exciting.... works brilliantly

Ward Nurse

I use it more or less every time I see a patient

Consultant Geriatrician

It's really useful to look up people's drug history. Sometimes you see a patient hasn't had a prescription for six months so aren't taking their drugs as they should.

Deputy Medical Director

At weekends, it's absolutely essential. I don't get to see half as many patients if I don't have access to their full medical history

Consultant in diabetes

When I am alerted that someone is coming in by ambulance, before they arrive at the ED I always check the computer and their records. It saves time, and the quicker I can act and start treating the patient, the better their prospects of recovery.

Consultant in Stroke Care

It is very simple to use and contains important relevant information. I would recommend signing up for this as we need to obtain as many resources as possible to do the best we can for our Residents

Manager, Care Home

My life is so much easier with it. My patients are from all over the South Coast so having access to their medication lists etc is great

Prostate Cancer Nurse Specialist

It really is user friendly

Community Team Leader

Utterly fantastic!

Learning Disability Nurse



How do I get access?

New user access is set up according to job role and employing organisation

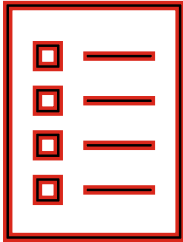
If you work for one of the following organisations, please contact your IT department/co-ordinator/Practice Manager to arrange access:

- Hampshire County Council
- Hampshire Hospitals NHS Foundation Trust
- GP Surgery
- IOW NHS Trust
- PHL Group
- Portsmouth Hospitals University NHS Trust
- North Hants Urgent Care
- SCAS
- Solent NHS Trust
- Southern Health NHS Foundation Trust
- Southampton City Council
- University Hospital Southampton NHS Foundation Trust

If you work for any other local organisation, please email info.chie@nhs.net for further guidance.



What user support material is available?



[Access
Guides](#)



[How to search for a patient](#)



[CHIE User
Guide](#)



[How to use the Medicines Viewer](#)



[Overview](#)



Useful links



[Public facing website](#)



[Staff facing website](#)

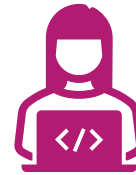


[Sign up to receive the CHIE Bulletin](#)

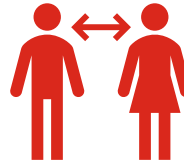


[Read our FAQs](#)

Contacts



[CHIE Service Desk](#)



[Stakeholder Engagement](#)



[Clinical Lead](#)



[Send us your feedback](#)



Hampshire
and **Isle of Wight**



CHIE 
Care and Health Information Exchange

CHIE – An introduction

August 2022

